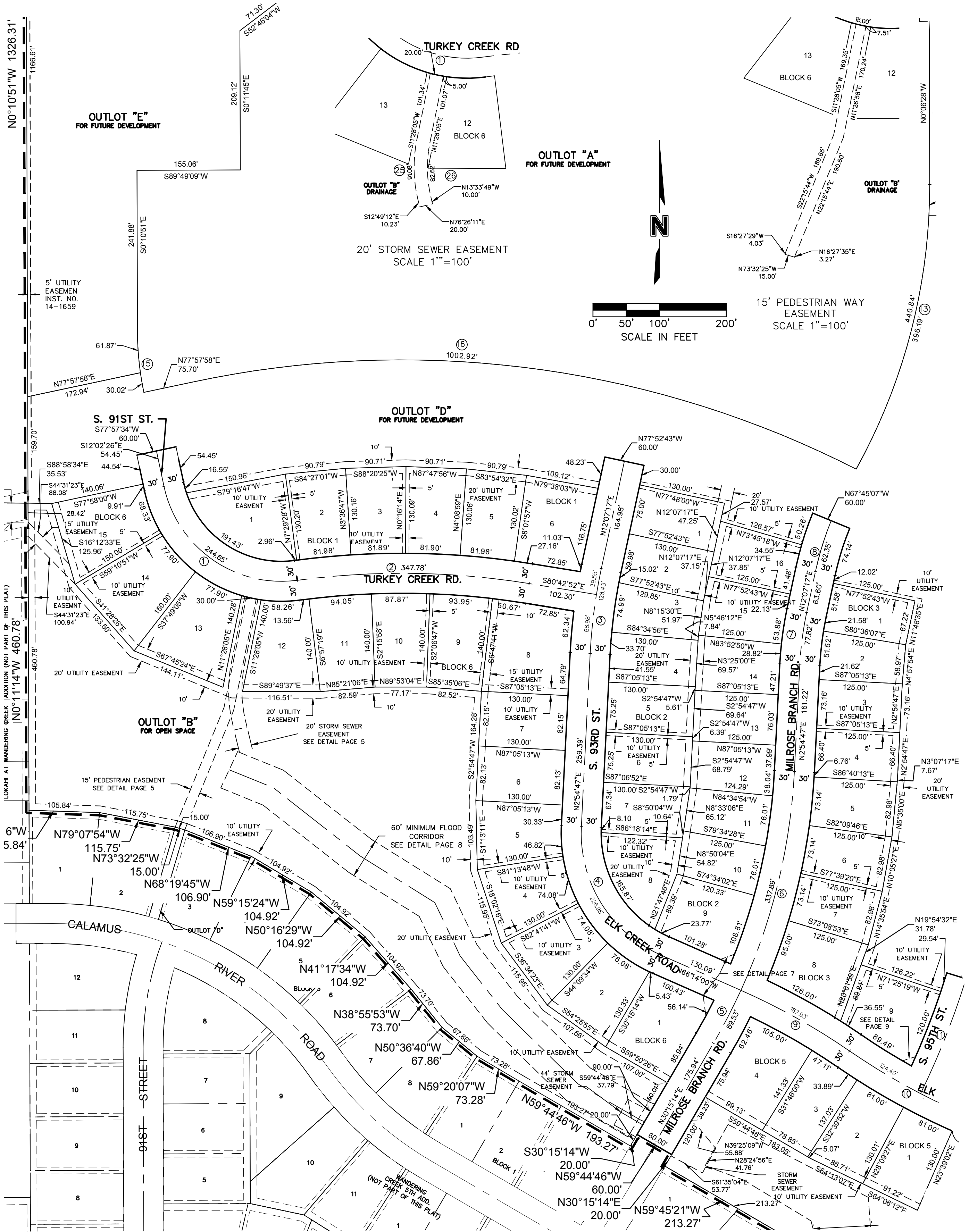


WANDERING CREEK 8TH ADDITION

FINAL PLAT

(THIS PLAT BASED UPON PUD CZ#17030D FOR
WANDERING CREEK)



DWG: F:\2021\06501-07000\021-06881\40-Design\Survey\SRV\Final Plat\Drawings\FP_WC8A_02106881_NEW.dwg
DATE: Jul 14, 2022 10:20am
XREFS: MICHAEL_JOHNSON_LS_NE
USER: dheesacker
FP_WC6A_B201850
V_TOPO_152987
V_SR_IrregularTracts_(Graf)_015-2987
C_PBASE_21850
L1B3-SignEase
D17-1391_WC2NDADDFF
C_PPLAT_02106881
city2DSubdivis