

DWG: F:\2021\06501-07000\021-06881\40-Design\Survey\SRV\Final\Drawings\FP_WC8A_02106881_NEW.dwg
DATE: Jun 22, 2022 1:56pm
XREFS: MICHAEL_JOHNSON_LS_NE 020-1850_WC5AFP 017-1391_FBTTAFP
USER: dheesacker FP_WC6A_B201850
V_TOPO_152987 V_SR_IrregularTracts_(Graff)_015-2987 C_PBASE_21850 L1B3-SignEase D17-1391_WC2NDADDFP C_PPLAT_02106881 city2DSubdivis

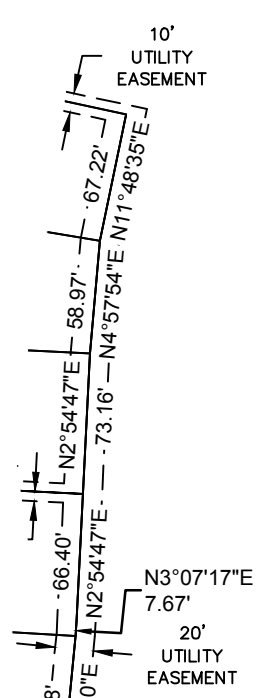
WANDERING CREEK 8TH ADDITION FINAL PLAT (THIS PLAT BASED UPON PUD CZ#17030D FOR WANDERING CREEK)

S89°27'39"E 299.97'
299.97'

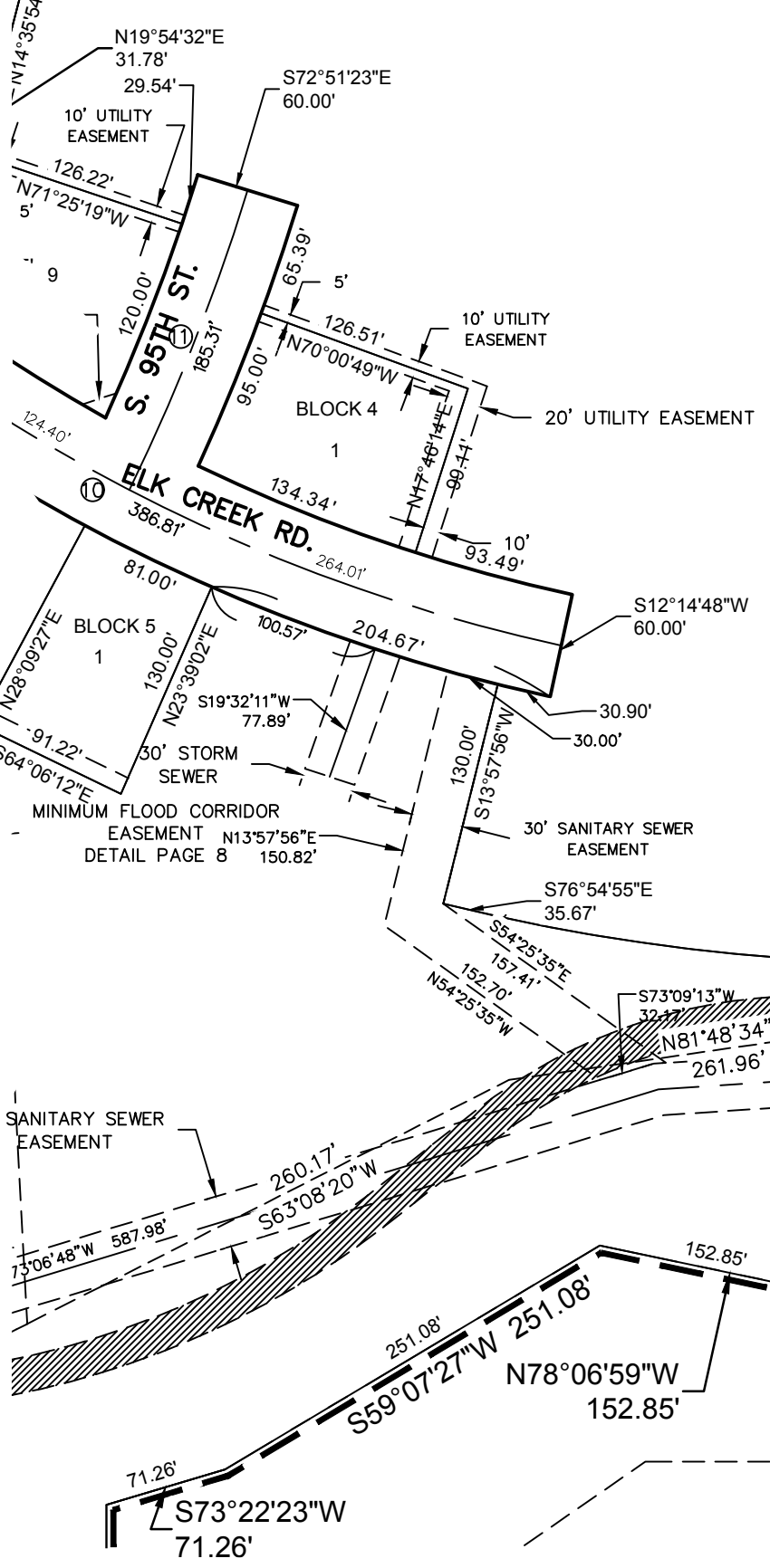
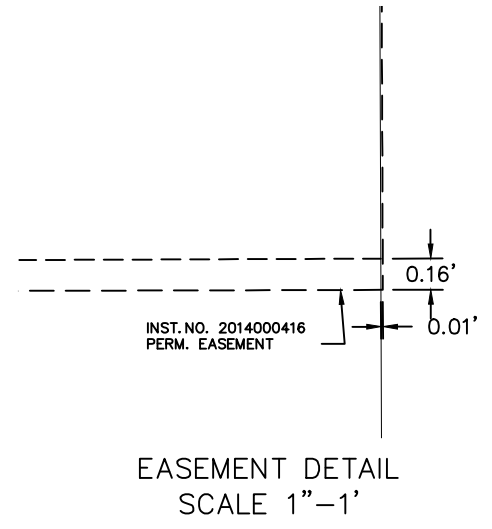
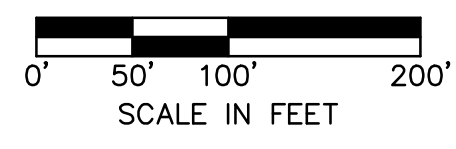
85' DRAINAGE
AND SLOPE EASEMENT
INST. NO. 11-010618

LOT 1
FBT ADD.
(NOT PART OF
THIS PLAT)

S89°27'26"E 455.54'
455.54'



OUTLOT "D"
FOR FUTURE DEVELOPMENT



INST. NO.
2014000416
ACCESS
EASEMENT

S51°34'10"E 96.76'
DETAIL PAGE 3

S. 98TH STREET

S1°40'00"W 283.48'

S2°28'51"W 324.18'

S1°07'53"W 236.92'

S0°13'03"E 575.35'

S. 98TH STREET

P.O.B.