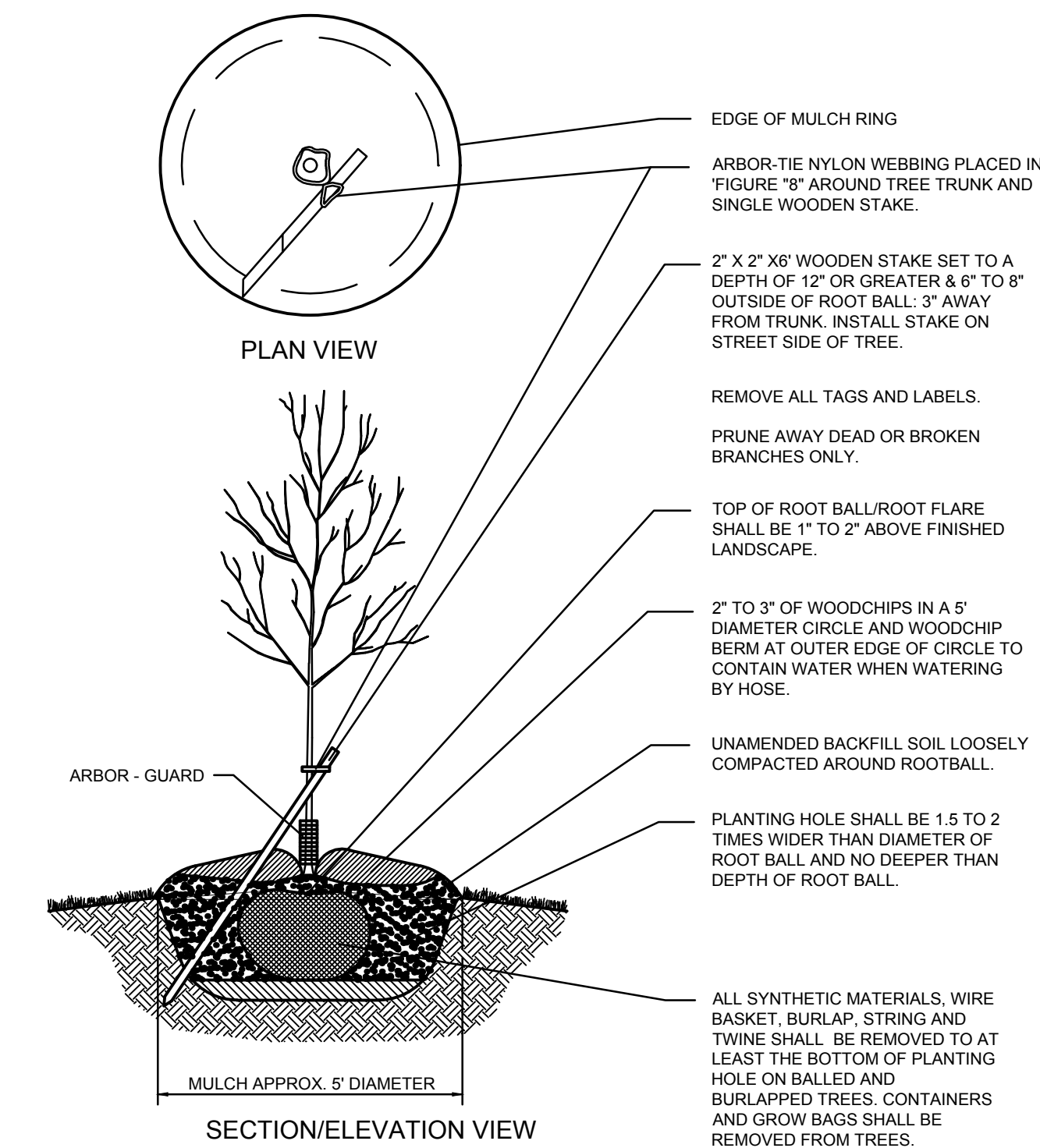


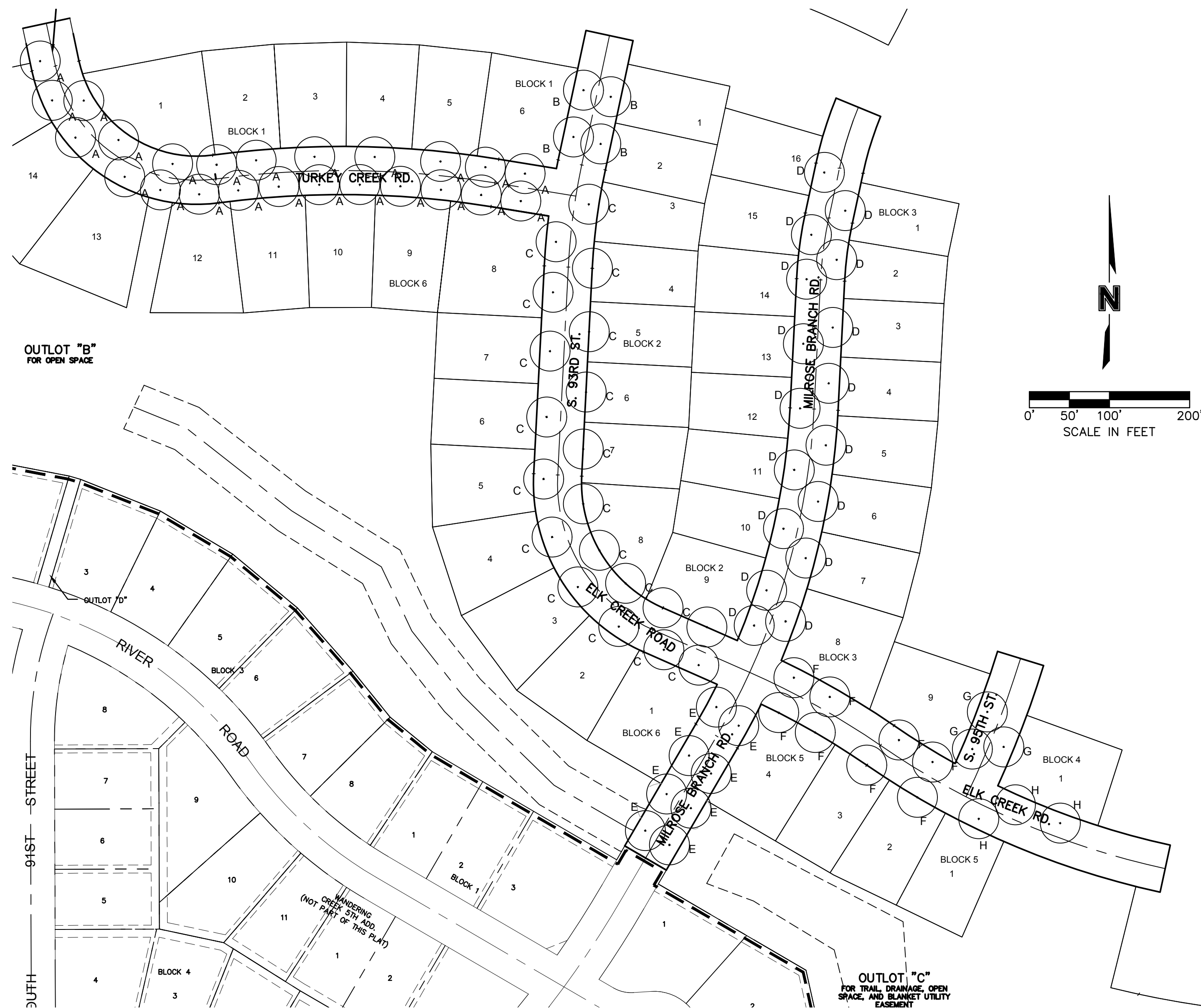
# WANDERING CREEK 8TH ADDITION STREET TREE PLAN

PREPARED BY OLSSON, INC., JUNE 22ND, 2022  
601 P STREET, SUITE 200, LINCOLN, NE 68508 (402)474-6311

STREET TREE SCHEDULE									
KEY	LOCATION	COMMON NAME	BOTANICAL NAME	SIZE @ PLANTING	PLANTING METHOD	DESIGN SPRD.	DESIGN HT.	QUANTITY	STREET TYPE
A	TURKEY CREEK DR.	OVERCUP OAK	QUERCUS LYRATA	1 1/2" cal.	B&B	45'	60'	24	LOCAL COLLECTOR
B	S. 93RD STREET N. OF TURKEY CREEK DR.	WHITE OAK	QUERCUS ALBA	1 1/2" cal.	B&B	60'	60'	4	LOCAL COLLECTOR
C	S. 93RD STREET S. OF TURKEY CREEK DR.	SARATOGA GINKGO	GINKGO BILOBA	1 1/2" cal.	B&B	40'	50'	20	LOCAL COLLECTOR
D	MILROSE BRANCH RD.	COMMON HACKBERRY	CELTIS OCCIDENTALIS	1 1/2" cal.	B&B	35'	40'	17	LOCAL COLLECTOR
E	MILROSE BRANCH RD. S. OF ELK CREEK RD.	OHIO BUCKEYE	AESCVLUS GLABRA	1 1/2" cal.	B&B	35'	40'	8	LOCAL COLLECTOR
F	ELK CREEK RD. E. OF MILROSE BRANCH RD.	PROSPECTOR ELM	ULMUS WILSONIANA	1 1/2" cal.	B&B	25'	35'	8	LOCAL COLLECTOR
G	SOUTH 95TH STREET.	GOLDEN RAINTREE	KHOELREUTERIA PANICULATA	1 1/2" cal.	B&B	35'	40'	3	LOCAL COLLECTOR
H	ELK CREEK RD. EAST OF SOUTH 95TH STREET	HIS MAJESTY CORK TREE	PHELLODENDRON SACHALINENSE	1 1/2" cal.	B&B	35'	40'	3	LOCAL COLLECTOR



DECIDUOUS TREE PLANTING DETAIL FOR STREET TREES  
NOT TO SCALE



### GENERAL NOTES

- ALL PLANT MATERIALS INSTALLED SHALL BE "NURSERY GROWN" MEETING THE FOLLOWING CRITERIA:
  - PLANT MATERIAL GROWN BY ESTABLISHED COMMERCIAL NURSERIES AND SOLD TO LICENSED AND CERTIFIED NURSERIES AND/OR LANDSCAPE CONTRACTORS.
  - GROWN AND SOLD ACCORDING TO AMERICAN STANDARDS FOR NURSERY STOCK SPECIFICATIONS (ANSI Z60.1-1990).
  - BE RATED FOR ESTABLISHMENT, GROWTH AND SURVIVAL IN PLANT HARDINESS ZONES 5, 4, AND/OR 3 ACCORDING TO THE LATEST VERSION OF THE USDA PLANT HARDINESS ZONE MAP.
- THE CITY OF LINCOLN ARBORIST SHALL MARK STREET TREE PLANTING LOCATIONS PRIOR TO PLANTING. THE CONTACT NUMBER FOR THE FORESTRY DEPARTMENT IS 441-7035.
- ALL OUTLOT AREAS TO BE MAINTAINED BY THE DEVELOPER AND/OR HOMEOWNER/NEIGHBORHOOD ASSOCIATION.
- ALL MEDIAN, ISLANDS, TRAFFIC CIRCLES TO BE MAINTAINED BY THE DEVELOPER AND/OR HOME OWNERS/NEIGHBORHOOD ASSOCIATION.
- A CERTIFIED LANDSCAPE CONTRACTOR AS APPROVED BY THE PARKS AND RECREATION DEPARTMENT SHALL BE USED TO INSTALL STREET TREES.
- STREET TREES WILL BE LOCATED OUTSIDE OF LES TRANSMISSION LINE EASEMENTS. NO PORTION OF A MATURE TREE SHALL ENCRUCH INTO LES TRANSMISSION LINE EASEMENTS.
- THIS STREET TREE AND LANDSCAPE PLAN IS SCHEMATIC AND ONLY TO BE USED TO SET STREET TREE AND LANDSCAPE SPECIES AND MATERIALS, AND ALSO USED TO CALCULATE STREET TREE AND LANDSCAPE ESCROW AMOUNTS.

NOTE: IT IS THE CONTRACTOR'S RESPONSIBILITY TO CONTACT UNDERGROUND SERVICE ALERT @ 1-800-331-5666 IN ADVANCE OF ANY EXCAVATION FOR THE MARK-OUT OF THE LOCATION OF UTILITIES AND NOTIFICATION OF COMMENCEMENT OF WORK.

### LEGEND:

PROPOSED STREET TREE

