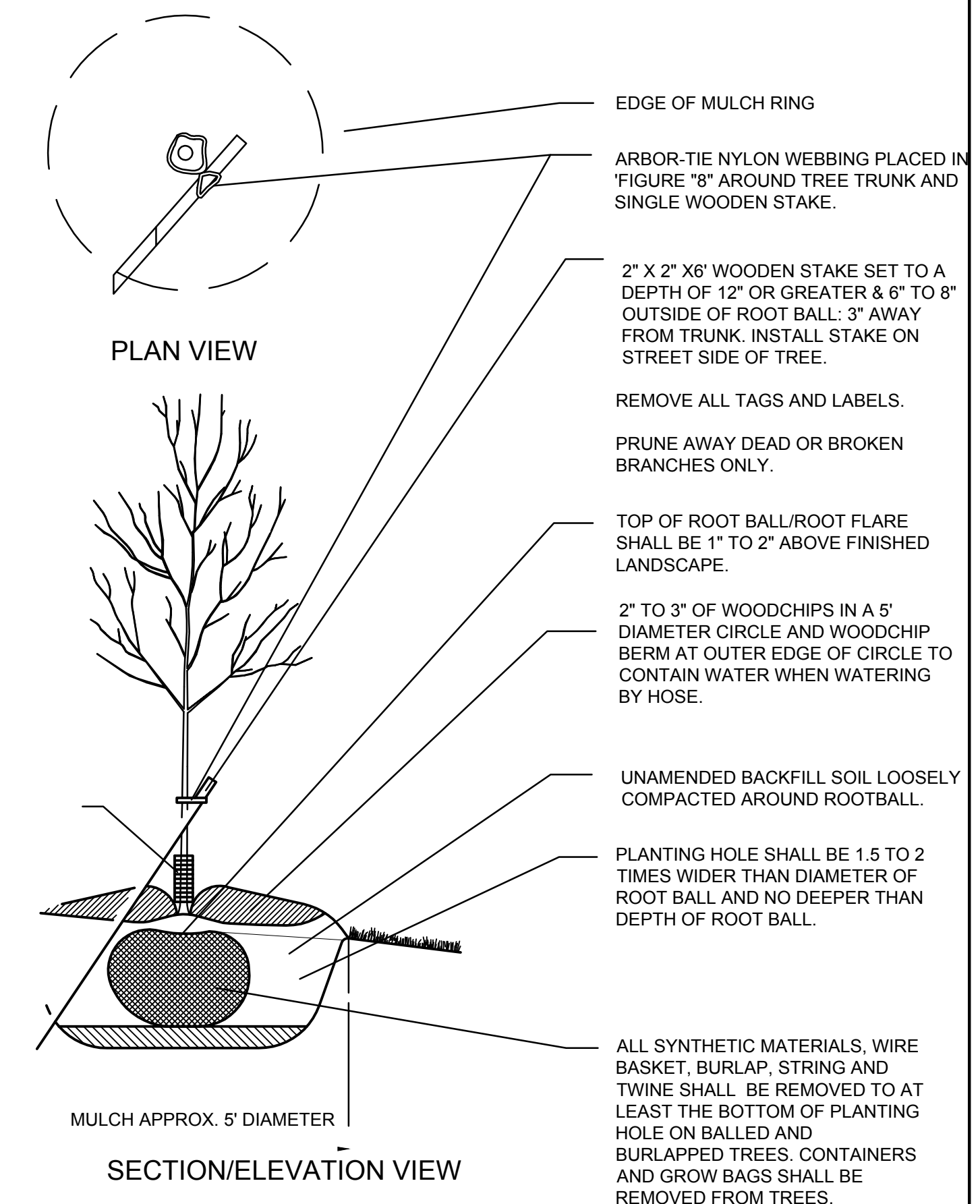
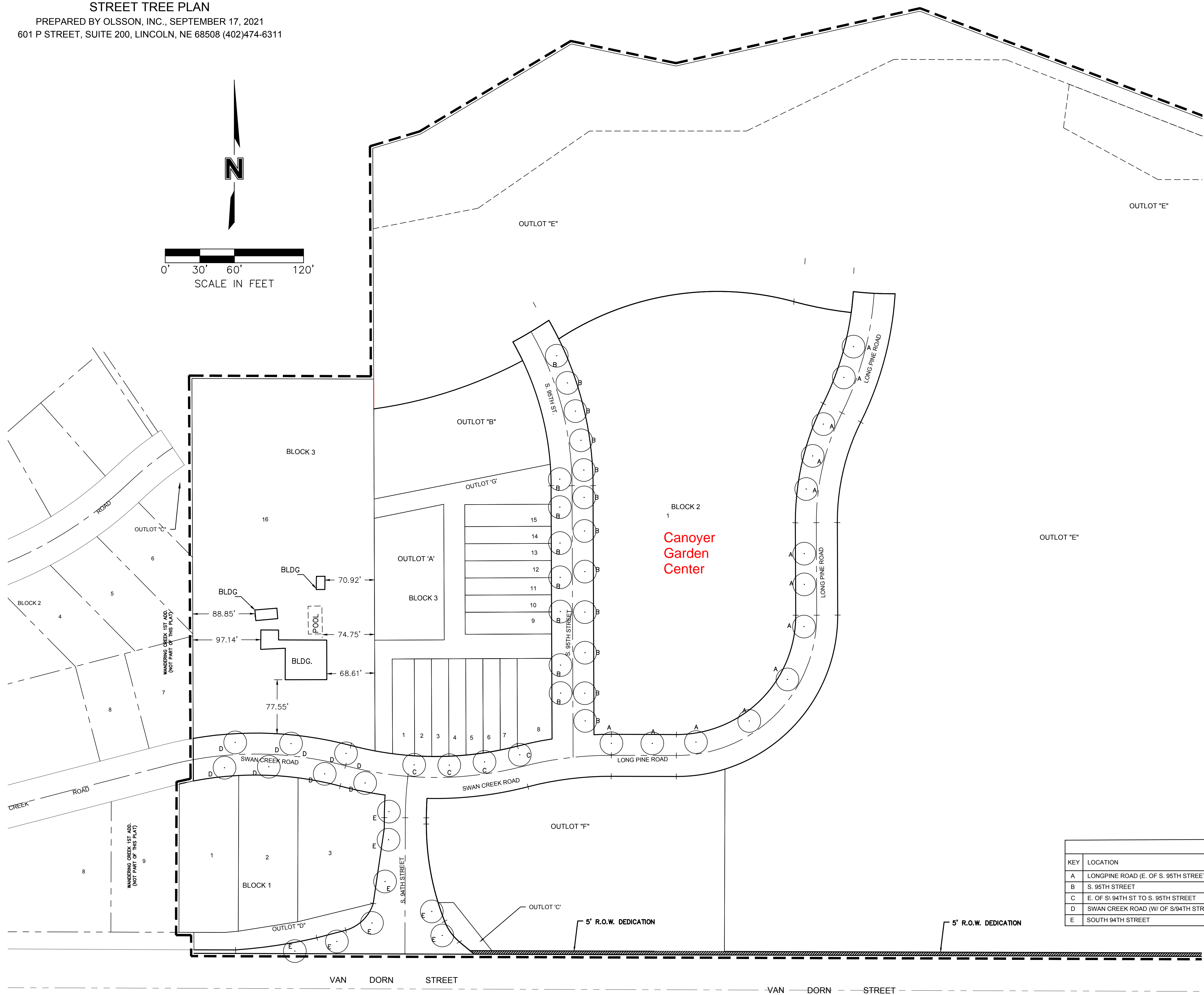


WANDERING CREEK 6TH ADDITION

FINAL PLAT

STREET TREE PLAN

PREPARED BY OLSSON, INC., SEPTEMBER 17, 2021
601 P STREET, SUITE 200, LINCOLN, NE 68508 (402)474-6311



DECIDUOUS TREE PLANTING DETAIL FOR STREET TREES

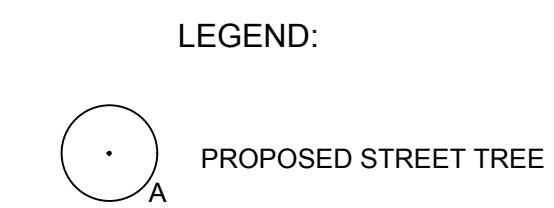
NOT TO SCALE

GENERAL NOTES

- ALL PLANT MATERIALS INSTALLED SHALL BE "NURSERY GROWN" MEETING THE FOLLOWING CRITERIA:
 - PLANT MATERIAL GROWN BY ESTABLISHED COMMERCIAL NURSERIES AND SOLD TO LICENSED AND CERTIFIED NURSERIES AND/OR LANDSCAPE CONTRACTORS.
 - GROWN AND SOLD ACCORDING TO AMERICAN STANDARDS FOR NURSERY STOCK SPECIFICATIONS (ANSI Z60.1-1990).
 - BE RATED FOR ESTABLISHMENT, GROWTH AND SURVIVAL IN PLANT HARDINESS ZONES 5, 4, AND/OR 3 ACCORDING TO THE LATEST VERSION OF THE USDA PLANT HARDINESS ZONE MAP.
- THE CITY OF LINCOLN ARBORIST SHALL MARK STREET TREE PLANTING LOCATIONS PRIOR TO PLANTING. THE CONTACT NUMBER FOR THE FORESTRY DEPARTMENT IS 441-7035.
- ALL OUTLOT AREAS TO BE MAINTAINED BY THE DEVELOPER AND/OR HOMEOWNER/NEIGHBORHOOD ASSOCIATION.
- ALL MEDIAN, ISLANDS, TRAFFIC CIRCLES TO BE MAINTAINED BY THE DEVELOPER AND/OR HOME OWNERS/NEIGHBORHOOD ASSOCIATION.
- A CERTIFIED LANDSCAPE CONTRACTOR AS APPROVED BY THE PARKS AND RECREATION DEPARTMENT SHALL BE USED TO INSTALL STREET TREES.
- STREET TREES WILL BE LOCATED OUTSIDE OF LES TRANSMISSION LINE EASEMENTS. NO PORTION OF A MATURE TREE SHALL ENCR OACH INTO LES TRANSMISSION LINE EASEMENTS.
- THIS STREET TREE AND LANDSCAPE PLAN IS SCHEMATIC AND ONLY TO BE USED TO SET STREET TREE AND LANDSCAPE SPECIES AND MATERIALS, AND ALSO USED TO CALCULATE STREET TREE AND LANDSCAPE ESCROW AMOUNTS.

NOTE: IT IS THE CONTRACTOR'S RESPONSIBILITY TO CONTACT UNDERGROUND SERVICE ALERT @ 1-800-331-5666 IN ADVANCE OF ANY EXCAVATION FOR THE MARK-OUT OF THE LOCATION OF UTILITIES AND NOTIFICATION OF COMMENCEMENT OF WORK.

STREET TREE SCHEDULE									
KEY	LOCATION	COMMON NAME	BOTANICAL NAME	SIZE @ PLANTING	PLANTING METHOD	DESIGN SPRD.	HT.	QUANTITY	STREET TYPE
A	LONGPINE ROAD (E. OF S. 95TH STREET)	HERITAGE OAK	QUERCUS X MACDANIELLI	1 1/2" cal.	B&B	45'	80'	26	LOCAL COLLECTOR
B	S. 95TH STREET	AMERICAN LINDEN	TILIA AMERICANA	1 1/2" cal.	B&B	40'	60'	22	LOCAL COLLECTOR
C	E. OF S. 94TH ST TO S. 95TH STREET	SAWTOOTH OAK	QUERCUS ACUTISSIMA	1 1/2" cal.	B&B	20'	40'	7	LOCAL COLLECTOR
D	SWAN CREEK ROAD (W/ OF S. 94TH STREET)	HILLS OAK	QUERCUS ELLIPSOIDALIS	1 1/2" cal.	B&B	35'	40'	8	LOCAL COLLECTOR
E	SOUTH 94TH STREET	FRONTIER ELM	ULMUS CARPINIFOLIA X PARVIFOLIA	1 1/2" cal.	B&B	15'	35'	10	LOCAL COLLECTOR



DWG: F:\2020\1501-2000\020-1850-B\40-Design\Survey\SRV\Find Plat\Drawings\FP_WCA_B201850.dwg
 DATE: Sep 22, 2021 11:53am
 XREFS: 020-1850_PUD-LEGAL 017-139_WCAAPP MICHAEL JOHN OLSSON LIS_NE V_SR_IrregularTracts_(Grdf)_015-2987 V_TPOD_152987 cityZDSsubdivision C_PBASE_21850 C_PLAT_B2018