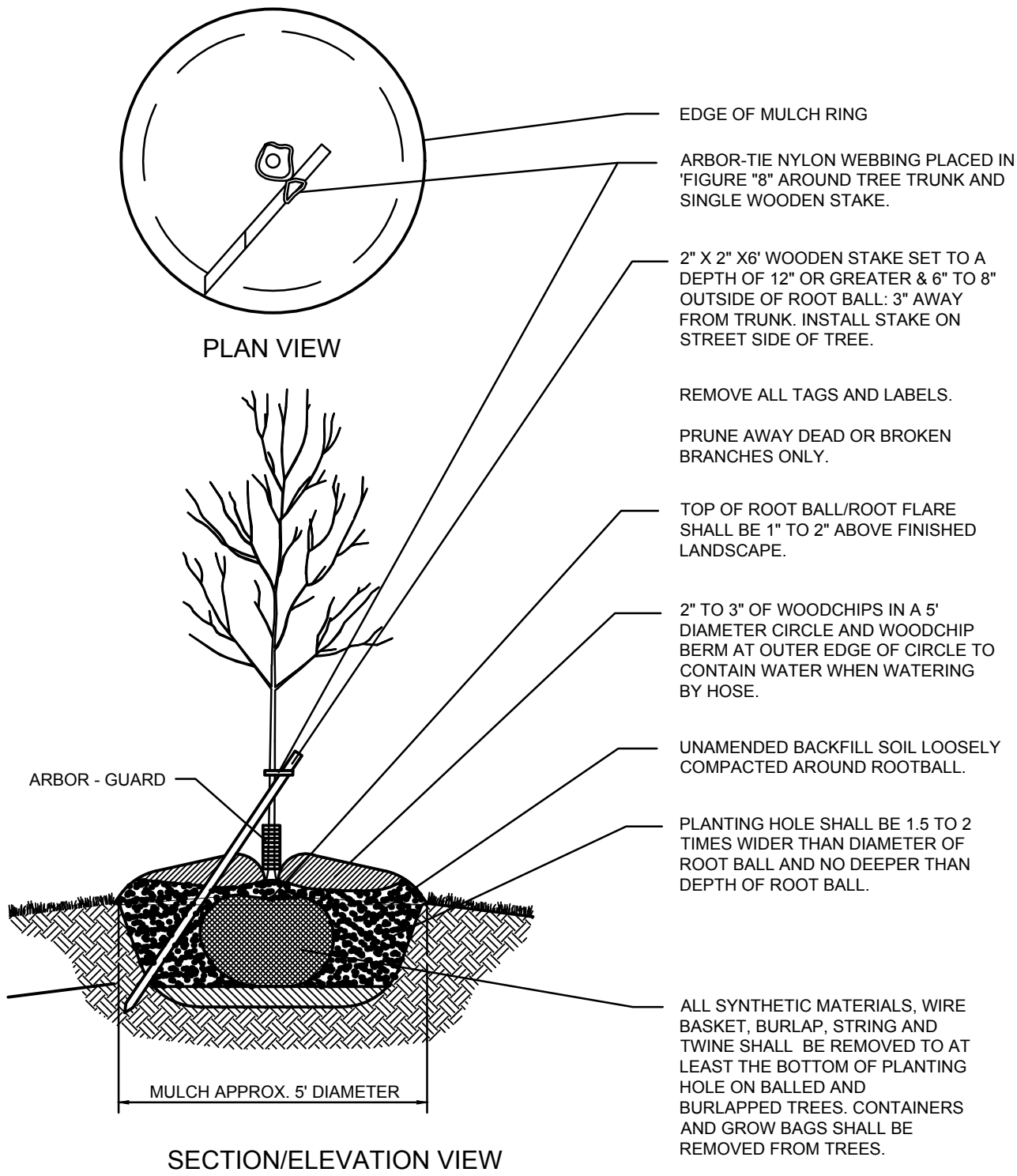


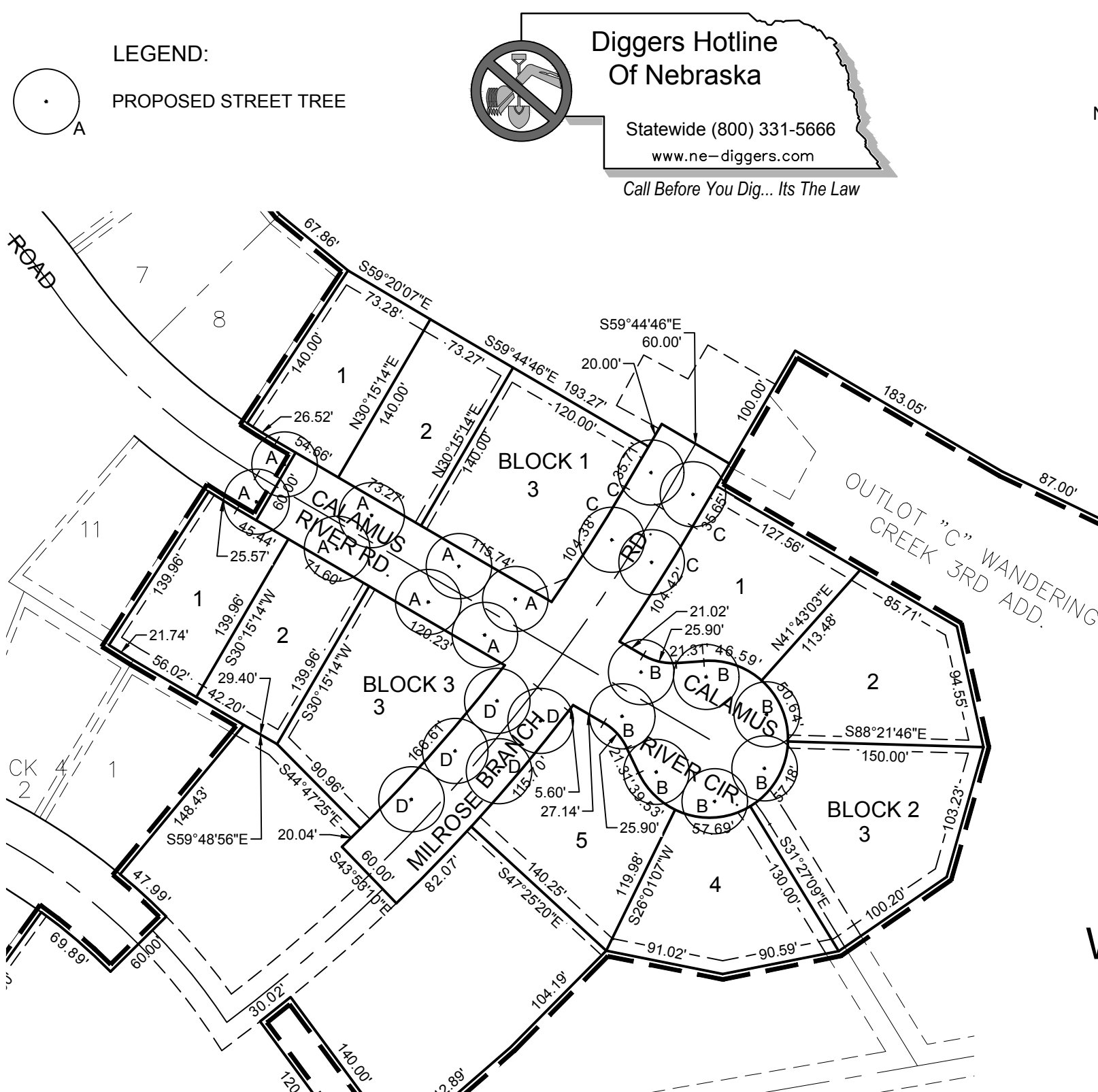
STREET TREE SCHEDULE									
KEY	LOCATION	COMMON NAME	BOTANICAL NAME	SIZE @ PLANTING	PLANTING METHOD	DESIGN		QUANTITY	STREET TYPE
						SPRD.	HT.		
A	CALAMUS RIVER ROAD	TULIP TREE	LIRIODENDRON	1 1/2" cal.	B&B	80'	40'	8	LOCAL COLLECTOR
B	CALAMUS RIVER CIRCLE	GOLDEN RAINTREE	KHOELREUTERIA PANICULTATA	1 1/2" cal.	B&B	25'	30'	7	LOCAL COLLECTOR
C	MILROSE BRANCH ROAD (NORTH OF CALAMUS RIVER RD.)	YELLOWWOOD	CLADRASTIS KENTUKEA	1 1/2" cal.	B&B	50'	50'	4	LOCAL COLLECTOR
D	MILROSE BRANCH ROAD (SOUTH OF CALAMUS RIVER RD.)	IRONWOOD	OSTRYA VIRGINIANA	1 1/2" cal.	B&B	30'	30'	5	LOCAL COLLECTOR



GENERAL NOTES

- ALL PLANT MATERIALS INSTALLED SHALL BE "NURSERY GROWN" MEETING THE FOLLOWING CRITERIA:
 - PLANT MATERIAL GROWN BY ESTABLISHED COMMERCIAL NURSERIES AND SOLD TO LICENSED AND CERTIFIED NURSERIES AND/OR LANDSCAPE CONTRACTORS.
 - GROWN AND SOLD ACCORDING TO AMERICAN STANDARDS FOR NURSERY STOCK SPECIFICATIONS (ANSI Z60.1-1990).
 - BE RATED FOR ESTABLISHMENT, GROWTH AND SURVIVAL IN PLANT HARDINESS ZONES 5, 4, AND/OR 3 ACCORDING TO THE LATEST VERSION OF THE USDA PLANT HARDINESS ZONE MAP.
- THE CITY OF LINCOLN ARBORIST SHALL MARK STREET TREE PLANTING LOCATIONS PRIOR TO PLANTING. THE CONTACT NUMBER FOR THE FORESTRY DEPARTMENT IS 441-7035.
- ALL OUTLOT AREAS TO BE MAINTAINED BY THE DEVELOPER AND/OR HOMEOWNER/NEIGHBORHOOD ASSOCIATION.
- ALL MEDIAN, ISLANDS, TRAFFIC CIRCLES TO BE MAINTAINED BY THE DEVELOPER AND/OR HOME OWNERS/NEIGHBORHOOD ASSOCIATION.
- A CERTIFIED LANDSCAPE CONTRACTOR AS APPROVED BY THE PARKS AND RECREATION DEPARTMENT SHALL BE USED TO INSTALL STREET TREES.
- STREET TREES WILL BE LOCATED OUTSIDE OF LES TRANSMISSION LINE EASEMENTS. NO PORTION OF A MATURE TREE SHALL ENCROACH INTO LES TRANSMISSION LINE EASEMENTS.
- THIS STREET TREE AND LANDSCAPE PLAN IS SCHEMATIC AND ONLY TO BE USED TO SET STREET TREE AND LANDSCAPE SPECIES AND MATERIALS, AND ALSO USED TO CALCULATE STREET TREE AND LANDSCAPE ESCROW AMOUNTS.

DECIDUOUS TREE PLANTING DETAIL FOR STREET TREES NOT TO SCALE



WANDERING CREEK 5TH ADDITION STREET TREE PLAN

PREPARED BY OLSSON, INC., SEP. 30TH, 2020
601 P STREET, SUITE 200
LINCOLN, NE 68508