

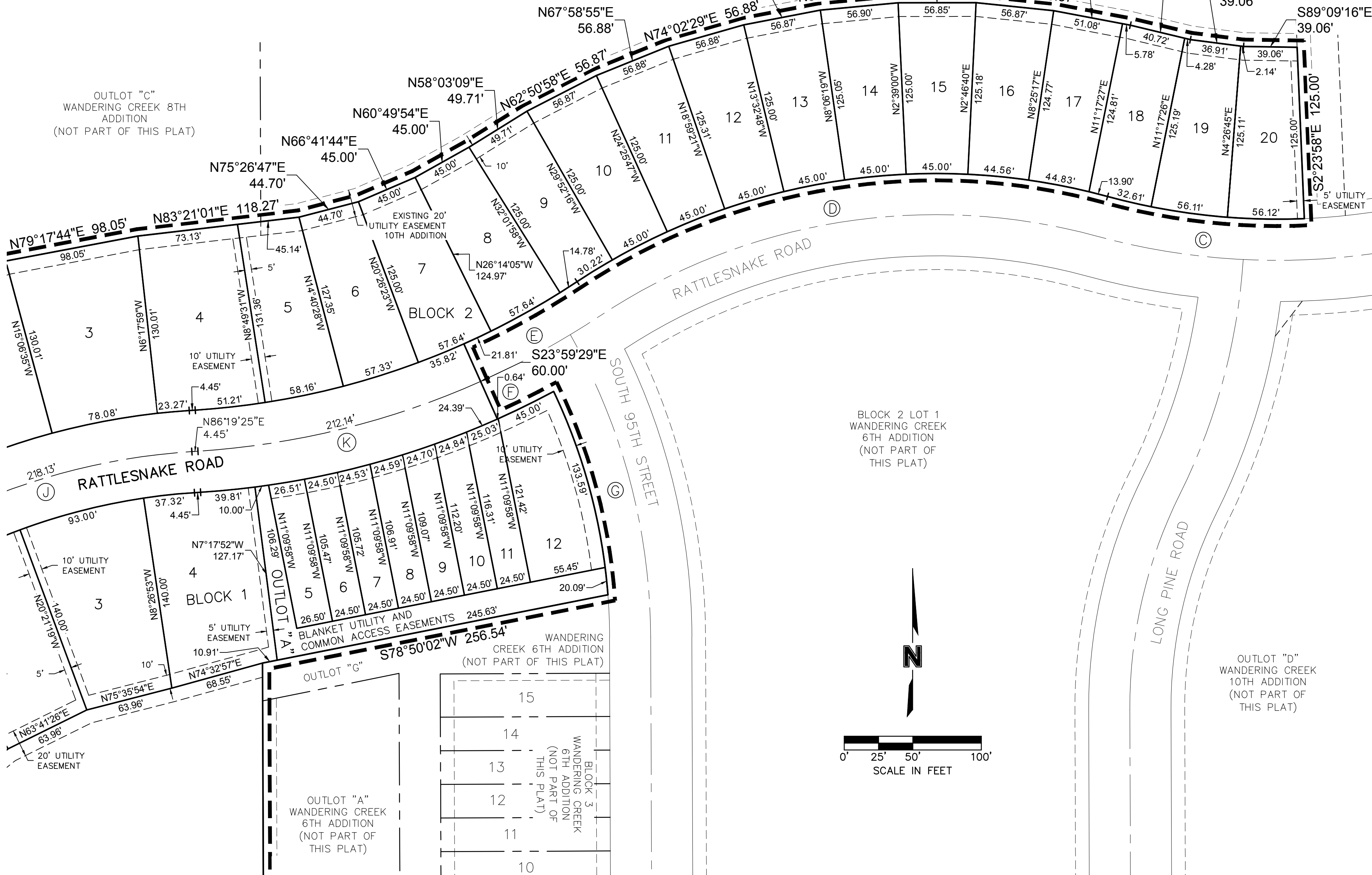
WANDERING CREEK 12TH ADDITION

FINAL PLAT

(THIS PLAT IS BASED UPON CHANGE OF ZONE NO. CZ17030D FOR WANDERING CREEK PUD)

OUTLOT "A"
WANDERING CREEK
10TH ADDITION
(NOT PART OF THIS PLAT)

OUTLOT "C"
WANDERING CREEK 8TH
ADDITION
(NOT PART OF THIS PLAT)



OUTLOT "D"
WANDERING CREEK
10TH ADDITION
(NOT PART OF
THIS PLAT)

DWG: F:\2022\06001-06500\022-06127-40-Design\Survey\SRVY\Final\Plat\Drawings\FP_WC12th_022-06127.dwg
 DATE: Apr 19, 2023 9:26am
 XREFS: FP_WC10th_022-03675 C_PPLAT_02203675
 USER: bjamies
 FP_WC8A_02106881 NEW C_PPLAT_02106881
 PP_WC6A_B201850 V_TOPO_152987
 E17-1391